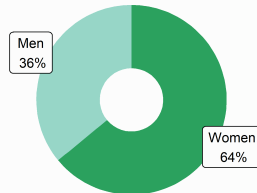


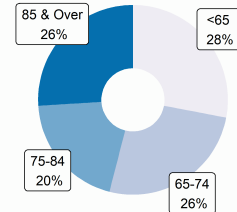
FACTS AND FIGURES FOR THE PROFESSION

ASSISTED LIVING RESIDENTS

Resident Gender



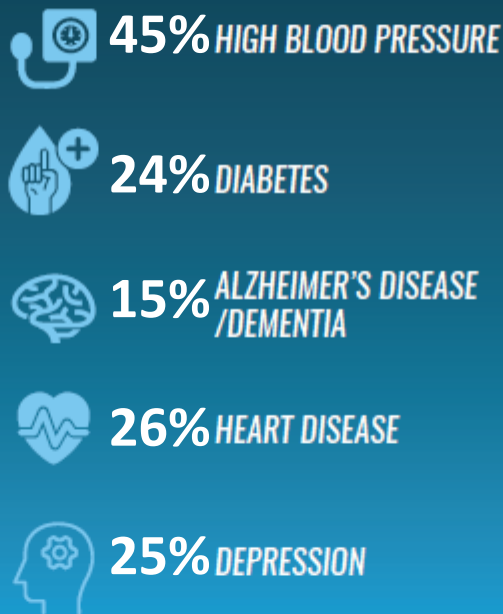
Resident Age



ACTIVITIES OF DAILY LIVING



COMMON CONDITIONS



ASSISTED LIVING PROVIDERS

53 TOTAL AL COMMUNITIES



66% of residents rely on Medicaid for their long term care in assisted living

ECONOMIC IMPACT

*Total impact is the sum of direct, indirect, and induced effects on the economy of the state.
Sources: CDC/NCHS, National Post-acute and Long-Term Care Study (2020), State Licensure Website, IMPLAN Economic Impact Data and Software

WORKFORCE

5,167 jobs direct

7,699 jobs total*

ECONOMIC ACTIVITY

\$606.7 Million direct

\$1.12 Billion total*

TAX REVENUE

\$48 Million state/local

\$125 Million federal